

RTSTAND LV124 / LV148

WHAT'S NEW? WHAT'S COMING UP?

Q4 2023SP1 Version



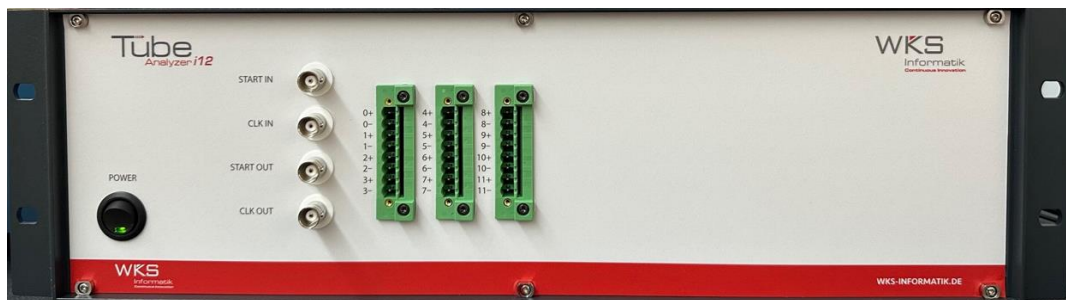
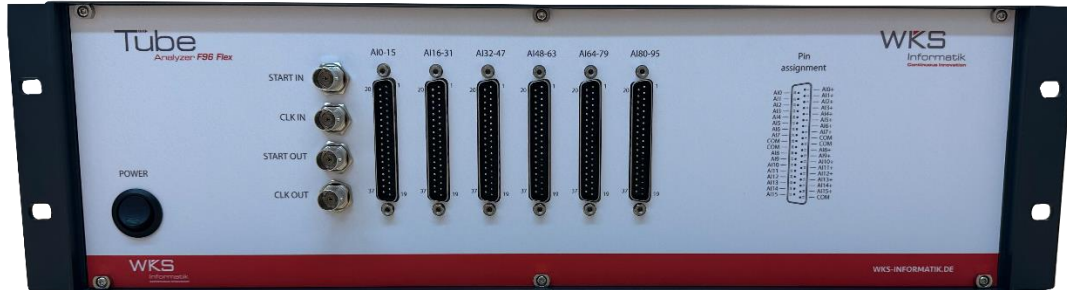
The RTStand LV124 / LV148 systems, for fully-automated testing according to the LV124 / LV148 norms, have been subjected to a second major release in Q4 2023 and have the version 2023SP1. The next major release is scheduled for Q2 2024 and will have version 2024.

What's new in 2023SP1?

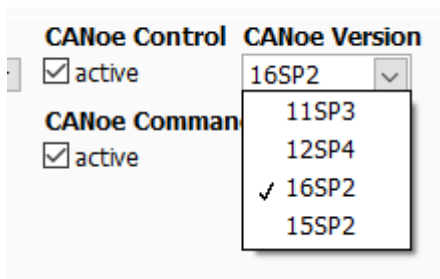
- New norms – Lucid, Audi specifications etc. integrated in our standard delivery library, currently supporting over 27 standard norms and more various customer test specifications.
- Fully automated testing support for automotive ethernet 100 / 1000 base-T1 and GMSL / GMSL 2 bus lines



- New ready to use products released : Tube Analyzer I12 (for up to 12 current measurements +/-5A) and F96flex (for up to 96 voltage measurements +/-10V)
- Fully automated testing support for the new Tube Analyzer products

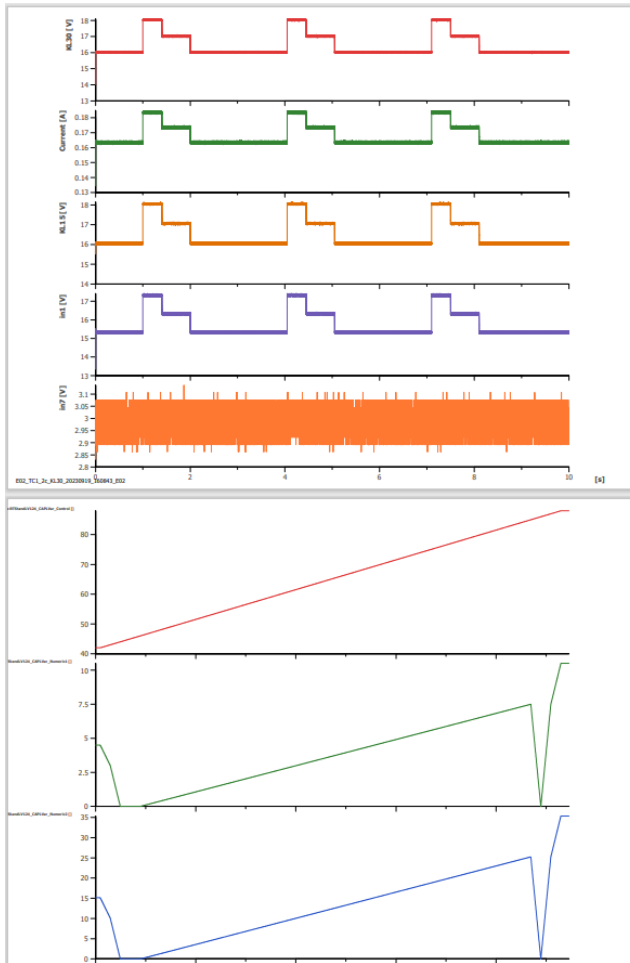


- Voltage Compensation for tests without sensing capabilities (e.g. tests for interruptions, offsets, short-circuits etc.)
- Configurable current limit for short-circuit tests
- Fully automated testing support for CANoe 15sp2



- Additional configuration options for CANoe automation and HowTo documentation for CANoe integration and time-synchronized BLF logging

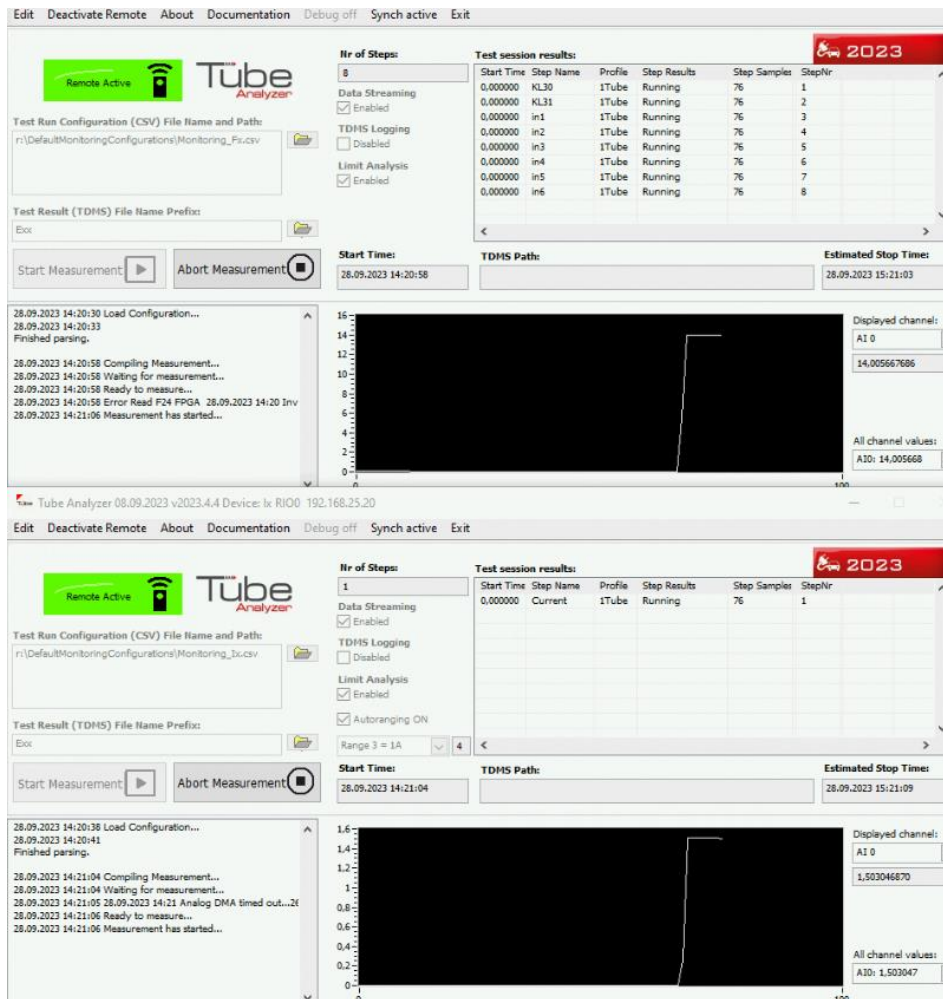
- CANoe 16SP2 project example including BLF logging and reporting example – for F24 systems



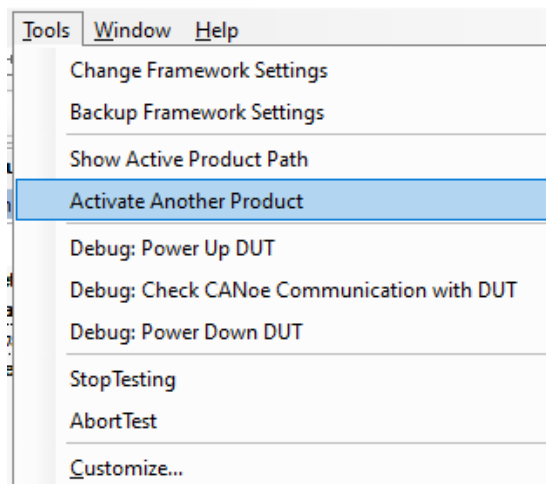
- Fully automated CANoe BLF file conversion and PDF report integration of BLF data



- Support for customer-defined operating mode names
- Monitoring of voltages and current before and after each test for all norms

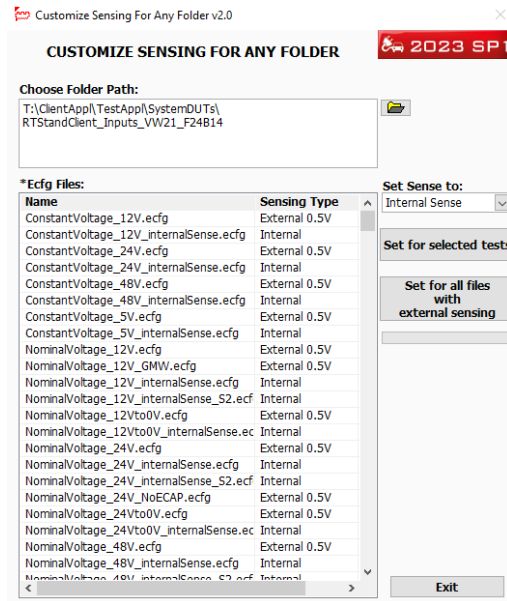


- Activating DUTs directly from the RTStand User Interface, improving testing speed.



- Toolchain improvements in Tube Analyzer and RTStand Switching

- **Signal Generation tool speeding up changing sensing properties for tests**



- **Improved documentation and new HowTo documents**
- **Improved runtime speed**
- **Various bug fixes and improvements**

What's coming up in 2024?

- **Further norm implementations (e.g. Tesla)**
- **Continuous improvements in runtime speed**
- **Tube Analyzer and 4Q amplifier range settings for each test in the Test Run definition tool**
- **User Interface redesign und new features**
- **New releases for the whole toolchain**
- **Further improvements for PDF reporting templates**
- **PDF report capabilities for restbus DTC display**

... and even more!